

SECTION B: BARGE SPECIFICATION: BLUE WHALE

1. Hatch cover : Pontoon Type
2. Cargo Holds : 03

3. Cargo Derricks : 5x 25MT SWL
4. Principal Particulars:

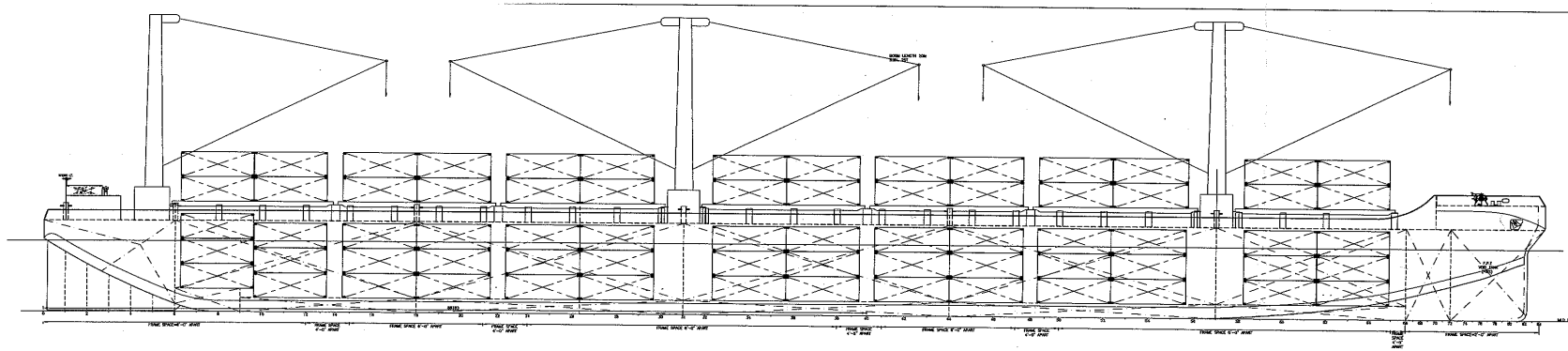
Length Overall : 124.178M 407.41'
Breadth (Moulded) : 22.200M 72.83'
Depth (Moulded) : 9.000M 29.53'
Draft Maximum : 6.380M
Design Load Tank Top : 8 MT/sq. meter
Design Load Hatch Cover : 4MT/ sq. meter
Date Keel laid : 10th October 2006
GRT/ NRT : 7562 / 4252
Hull No : GMG 0625

5. Loaded Displacement : 15,316.770
Lightship : 3,519.193
Deadweight : 11,797.577

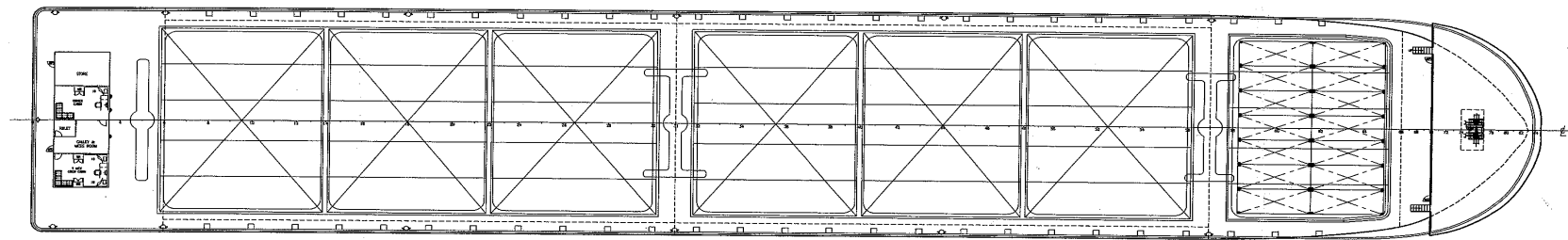
6. Navigation Area : Unrestricted
Classification society : Bureau Veritas (BV)

7. Container Stowage

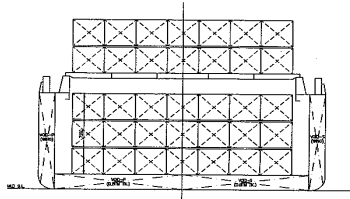
CONTAINER STOWAGE	TEU	MAX STACK LOAD
IST TIER	98	25MT
2 ND TIER	98	25MT
3 RD TIER	98	20MT
HATCH COVER		
1 ST TIER	98	20MT
2 ND TIER	98	20MT
TOTAL	490TEUS	11270MT



SIDE PROFILE



MAIN DECK PLAN



BODY PLAN


PRINCIPAL PARTICULAR

L.O.A.	124.179M (407.41 FT)	
BREADTH MOULDED	22.200M (72.83 FT)	
DEPTH MOULDED	9.000M (29.53 FT)	
DESIGN DRAFT	7.000M (22.97 FT)	
NOTATION	INTERNATION	
DESIGN LOAD		
ON TANK TOP	8 TONS/SQ.M	
ON HATCH COVER	4 TONS/SQ.M	
CONTAINER STOWAGE		
ON CARGO HOLD	TEU	MAX. STACK LOAD
1) 1ST TIER CONTAINERS	98 TEU	25 TONS
2) 2ND TIER CONTAINERS	98 TEU	25 TONS
3) 3RD TIER CONTAINERS	98 TEU	20 TONS
ON HATCH COVER		
4) 1ST TIER CONTAINERS	98 TEU	20 TONS
5) 2ND TIER CONTAINERS	98 TEU	20 TONS
TOTAL	490 TEU	11270 TONS

PRELIMINARY

Lo

John

DATE	MODIFICATION	REV	BY
 UNITED SHIP DESIGN (NAVAL ARCHITECT)			
NO. 1, 2ND FLOOR, LANE 9, MAMANG DAMU ROAD, 81000 SERI KAYANGAN, MALAYSIA. TEL: 084-330825, FAX: 084-333805 E-MAIL: udesign@pwt.net.my			
124M HATCH CARGO BARGE			
GENERAL ARRANGEMENT			
OWNER: JOHAN SHIPPING SDN BHD			
CLASS: BY			
DRAWN	CHECKED	APPROVED	TD NO.
WONG/PETER	H. WONG		SCALE
20.04.04	20.04.04		1 : 175
			US/189-01-(3)

This drawing and the information contained herein is supplied to the understanding that they are the exclusive property of UNITED SHIP DESIGN SDN BHD. They shall not be used or reproduced in whole or in part without permission in writing.